

Disney  
**Stitch**



Instruction Manual

# Learning Tablet



# INTRODUCTION

Thank you for purchasing the **Disney Stitch Learning Tablet!** Play fun educational activities with Stitch and Lilo as you enjoy the playful animations, sound effects and voice. The backlit screen and color changing light borders further enhance the experience as children engage with 4 fun games and 6 learning activities that help to reinforce language, math, music skills and so much more.



# INCLUDED IN THE PACKAGE

- Disney Stitch Learning Tablet
- Quick Start Guide

## WARNING

All packing materials such as tape, plastic sheets, packaging locks, removable tags, cable ties, cords and packaging screws are not part of this toy, and should be discarded for your child's safety.

## NOTE

Please save this user's manual as it contains important information.

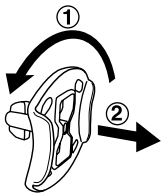
## ATTENTION

Pour la sécurité de votre enfant, débarrassez-vous de tous les produits d'emballage tels que rubans adhésifs, feuilles de plastique, attaches, étiquettes, cordons et vis d'emballage. Ils ne font pas partie du jouet.

## NOTE

Il est conseillé de sauvegarder ce manuel d'utilisation car il comporte des informations importantes.

## Unlock the packaging locks:



- ① Rotate the packaging lock 90 degrees anticlockwise.
- ② Pull out the packaging lock.

# INSTRUCTIONS



## WARNING:

Adult assembly required for battery installation.  
Keep batteries out of reach of children.

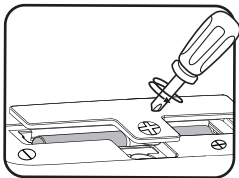


## ATTENTION :

Les piles ou accumulateurs doivent être installés par un adulte.  
Tenir les piles ou accumulateurs hors de portée des enfants.

## BATTERY INSTALLATION

1. Make sure the unit is turned **OFF**.
2. Locate the battery cover on the base of the unit. Use a screwdriver to loosen the screw. Then, remove the cover.
3. If used batteries are present, remove the batteries from the unit by pulling up on one end of the battery.
4. Install 2 new AA (LR6/AM-3) batteries following the diagram inside the battery box. (The use of new alkaline batteries is recommended for maximum performance).
5. Replace the battery cover and tighten the screw to secure.



## IMPORTANT: BATTERY INFORMATION

- Insert batteries with the correct polarity (+ and -).
- Do not mix old and new batteries.
- Do not mix alkaline, standard (carbon-zinc) or rechargeable batteries.
- Only batteries of the same or equivalent type as recommended are to be used.
- Do not short-circuit the supply terminals.
- Remove batteries during long periods of non-use.

- Remove exhausted batteries from the toy.
- Dispose of batteries safely. Do not dispose of batteries in fire.

#### RECHARGEABLE BATTERIES:

- Rechargeable batteries are only to be charged under adult supervision.
- Do not charge non-rechargeable batteries.

## **IMPORTANT : INFORMATIONS CONCERNANT LES PILES**

- Mettre en place les piles ou les accumulateurs en respectant les polarités + et -.
- Ne pas mélanger des piles ou des accumulateurs neufs avec des usagés.
- Ne pas mélanger différents types de piles : alcalines, zinc-carbone et rechargeables.
- Seules des piles du type recommandé doivent être utilisées.
- Ne pas mettre les bornes d'une pile ou d'un accumulateur en court-circuit (en reliant directement le + et le -).
- Retirer les piles ou les accumulateurs en cas de non-utilisation prolongée.
- Enlever les piles ou les accumulateurs usagés du jouet.
- Ne les jeter ni au feu ni dans la nature.

#### RECHARGEABLE BATTERIES:

- Les accumulateurs ne doivent être chargés que sous la surveillance d'un adulte.
- Ne pas tenter de recharger des piles non rechargeables.

# PRODUCT FEATURES

## 1. ON/OFF Button

To turn the unit On, press the **On/Off Button**. Press the **On/Off Button** again to turn the unit Off.

## 2. COLOR CHANGING BORDERS

Four vibrant border colors--including red, blue, pink and purple--light up as you play.



## 3. LIGHT-UP SCREEN

The backlight color of the screen can be adjusted from blue to purple, pink or red.



## 4. 4-ACTIVITY SLIDER

Slide the **Slider** to choose any of the 4 activities shown.

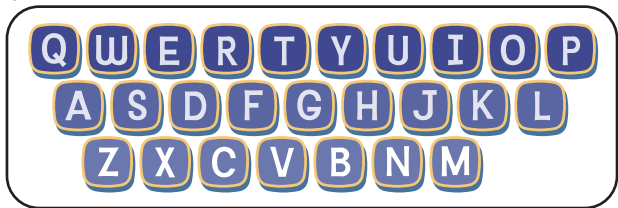
## 5. 6 ACTIVITY BUTTONS

Press one of the **Activity Buttons** to choose any of these 6 activities.



## 6. LETTER BUTTONS

Press the **Letter Buttons** to learn letters or to answer letter-related questions.



## 7. NUMBER/PIANO KEYS

Press the **Number/Piano Keys** to learn numbers, to answer number-related questions or to play the musical notes.



## 8. ARROW BUTTONS



Press the **Arrow Buttons** to navigate on the screen or to select an option.

## 9. OK BUTTON

Press the **OK Button** to confirm a selection.

## 10. BACKLIGHT CONTROL BUTTON

Press the Backlight Control Button to change the backlight color of the screen between blue, pink, purple and red, or to turn the backlight off.

## 11. REPEAT BUTTON

Press the **Repeat Button** to repeat the game instruction or question.

## 12. SETTINGS BUTTON

Press the **Settings Button** to enter the Settings menu. From here you can choose to turn the background music On or Off, switch the color changing borders on or off, or adjust the volume and screen contrast. Press the **Arrow Buttons** to make a selection and then press the **OK Button** to confirm.

## 13. AUTOMATIC SHUT-OFF

To preserve battery life, the unit will automatically turn itself off after several minutes of inactivity. The unit can be turned on again by pressing the **On/Off Button**. The unit will also automatically turn off when the batteries are very low. A warning will be displayed on screen as a reminder to change the batteries.

### NOTE

If the unit turns itself off or if the lights fade during play, please install a new set of batteries.

# TO BEGIN PLAY

- Press the **On/Off Button** to turn the unit On. A short animation will play and you will be asked to select an activity.
- Slide the Activity Slider to choose one of the 4 related activities or press one of the **6 Activity Buttons** directly to play one of those activities.

## ACTIVITIES

### 1. Lilo's Camera



Lilo likes taking photos. Press any of the **Letter Buttons** to learn the alphabet and words. Press the **Number/Piano Keys** to learn numbers 1-10.



### 2. Photo Album



Lilo and Stitch are looking through the Photo Album. Press the **Arrow Buttons** to flip through the photos, then press the **OK Button** to listen to a description of the photo.



### 3. Tell the Truth



Pleakley is thinking of something... Press the **Letter Buttons** to type the message and avoid Fibber's alarm!



### 4. Music Time



Stitch is playing the ukulele. Press the **Number/Piano Keys** to play ukulele notes, or press the **Letter Buttons** to hear fun sounds.



## 5. Book Sorting

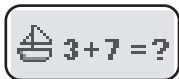
Stitch is reading books at Nani's house. The order of the books is messed up.

Press the **Arrow Buttons** to select the correct book according to the number order, then press the **OK Button** to confirm.



## 6. The Rental Hut

Lilo is hanging out with her sister, Nani, while she is working at the rental hut. There will be a variety of questions related to the rental hut that you will need to help answer. Press the **Arrow Buttons** to select the answer and the **OK Button** to confirm, or press the **Number/Piano Keys** to answer directly.



## 7. The Poster

The posters at the Aloha Animal Rescue centre have been damaged. Press the **Arrow Buttons** to select the correct piece and the **OK Button** to confirm, or press the **Letter Buttons** to answer directly.



## 8. What Is This?

Under Jumba's reducer ray effect, Lilo and Stitch become tiny. Everything appears so big that they can only see part of it! Press the **Letter Buttons** or **Number/Piano Keys** to guess what they are looking at.



## 9. Television Time

Lilo is watching TV, but the image on the screen is jumbled. Rearrange the pieces and place them in the correct positions. Press the **Arrow Buttons** to choose, then press the **OK Button** to confirm the piece to swap.



## 10. Action Match

The character on the left of the screen will make a series of movements to either the left or the right. Press the **Arrow Buttons** to control your character on the right side of the screen and repeat the sequence. The first sequence has 3 steps. Additional steps will be added as you continue to follow the sequences correctly. Master an 8-step sequence to win the game.



## CARE & MAINTENANCE

1. Keep the unit clean by wiping it with a slightly damp cloth.
2. Keep the unit out of direct sunlight and heat source.
3. Remove the batteries when the unit is not in use for an extended period of time.
4. Do not drop the unit on hard surfaces and do not expose the unit to moisture or water

# TROUBLESHOOTING

If for some reason the unit stops working, please follow these steps:

1. Turn the unit **Off**.
2. Interrupt the power supply by removing the batteries.
3. Let the unit stand for a few minutes, then replace the batteries.
4. Turn the unit **On**. The unit should now be ready to use again.
5. If the unit still does not work, install a new set of batteries.

## IMPORTANT NOTE:

If the problem persists, please call our **Consumer Services Department** at **1-800-521-2010** in the U.S., **1-877-352-8697** in Canada, or by going to our website **vtechkids.com** and filling out our **Contact Us** form located under the **Customer Support** link. Creating and developing VTech products is accompanied by a responsibility that we take very seriously. We make every effort to ensure the accuracy of the information, which forms the value of our products. However, errors sometimes can occur. It is important for you to know that we stand behind our products and encourage you to contact us with any problems and/or suggestions you might have. A service representative will be happy to help you.

## NOTE

This equipment has been tested and found to comply with the limits for a Class B digital device, pursuant to Part 15 of the FCC Rules. These limits are designed to provide reasonable protection against harmful interference in a residential installation. This equipment generates, uses and can radiate radio frequency energy and, if not installed and used in accordance with the instructions, may cause harmful interference to radio communications. However, there is no guarantee that interference will not occur in a particular installation. If this equipment does cause harmful interference to radio or television

reception, which can be determined by turning the equipment off and on, the user is encouraged to try to correct the interference by one or more of the following measures:

- Reorient or relocate the receiving antenna.
- Increase the separation between the equipment and receiver.
- Connect the equipment into an outlet on a circuit different from that to which the receiver is connected.
- Consult the dealer or an experienced radio/TV technician for help.

### **CAUTION**

Changes or modifications not expressly approved by the party responsible for compliance could void the user's authority to operate the equipment.

#### **Supplier's Declaration of Conformity**

##### **47 CFR § 2.1077 Compliance Information**

Trade Name: VTech®  
Model: 586100  
Product Name: Disney Stitch Learning Tablet  
Responsible Party: VTech Electronics North America, L.L.C.  
Address: 1156 W. Shure Drive, Suite 200  
Arlington Heights, IL 60004  
Website: vtechkids.com

THIS DEVICE COMPLIES WITH PART 15 OF THE FCC RULES. OPERATION IS SUBJECT TO THE FOLLOWING TWO CONDITIONS: (1) THIS DEVICE MAY NOT CAUSE HARMFUL INTERFERENCE, AND (2) THIS DEVICE MUST ACCEPT ANY INTERFERENCE RECEIVED, INCLUDING INTERFERENCE THAT MAY CAUSE UNDESIRE OPERATION.

CAN ICES(B)/NMB(B)

**Visit our website for more  
information about our products,  
downloads, resources and more.**

***vtechkids.com***

***vtechkids.ca***

Read our complete warranty policy online at  
***vtechkids.com/warranty***  
***vtechkids.ca/warranty***

